

IBEX Upgrade Manual

Contents

1. Physical connection	1
2. Copy the firmware to the device directory	2
3. Device Upgrade	2
4. Firmware version confirmation	3

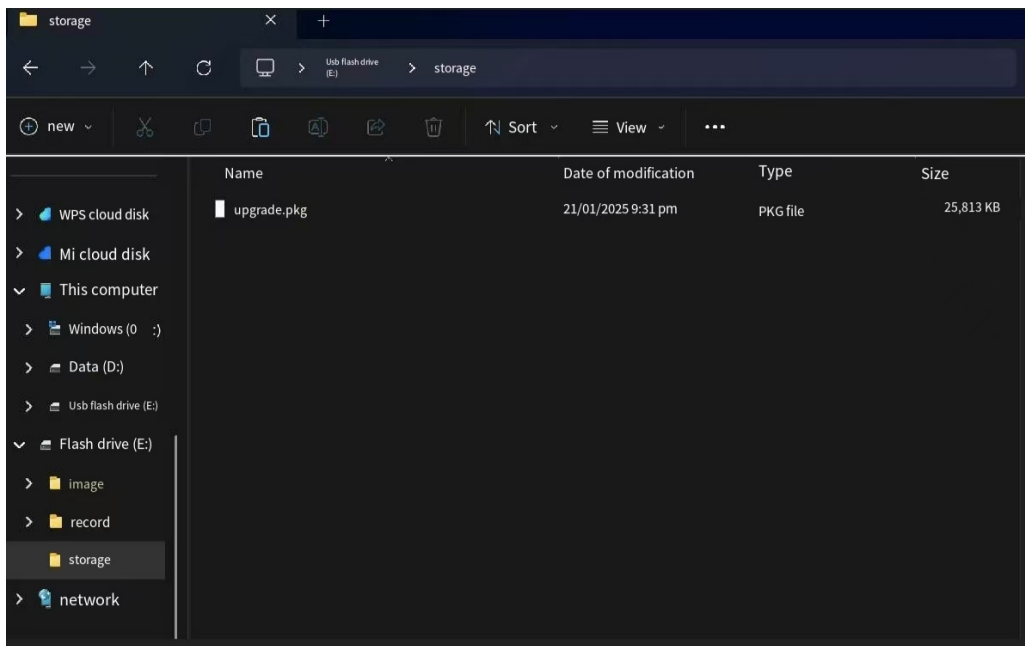
1. Physical connection

Please use USB-to-TypeC interface cable to connect the device and computer as shown in the picture below.

Note: Turn on the device first, then connect it to the computer.



2. Copy the firmware to the device directory



3. Device Upgrade

Upgrade the device from following path:
【Menu】 -> 【System】 -> 【Update】 -> 【Yes】





4. Firmware version confirmation

From the below path to check the device version is matched or not.

[Menu] -> [System] -> [Version]

